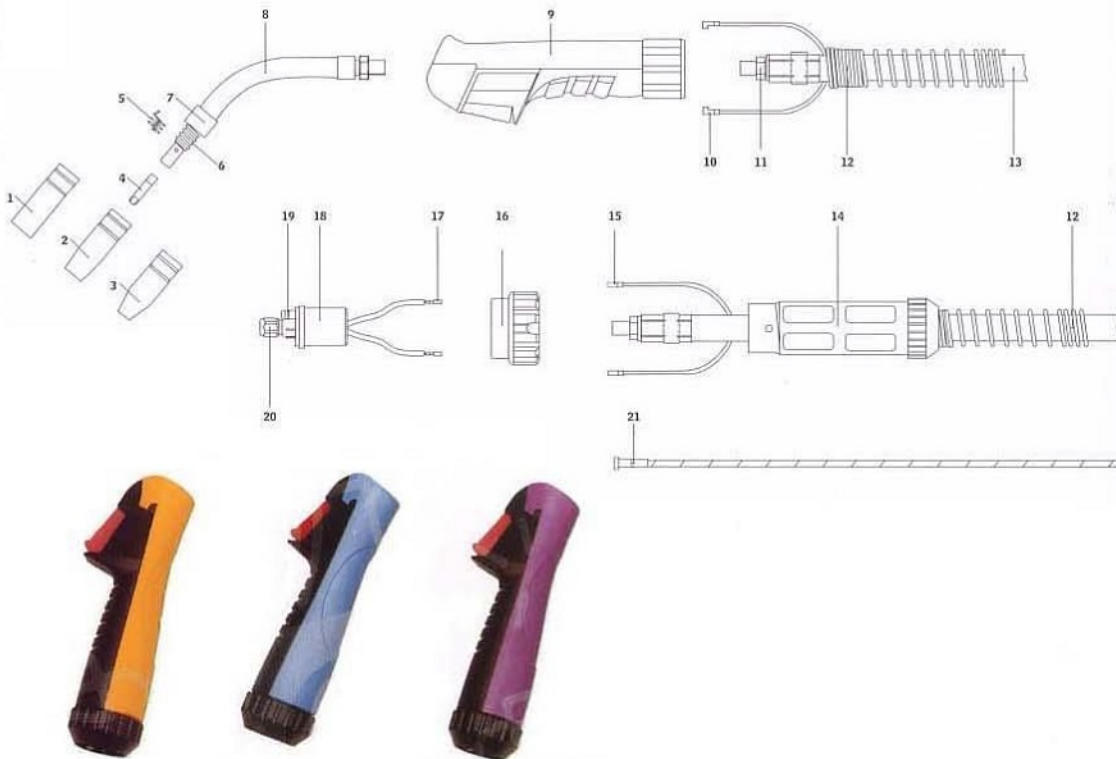


KM150 AIR COOLED EURO MODEL MIG WELDING TORCH

Rating: 180A CO² 150A mixed gas @ 60% duty cycle. 0.6 to 1.0mm wires

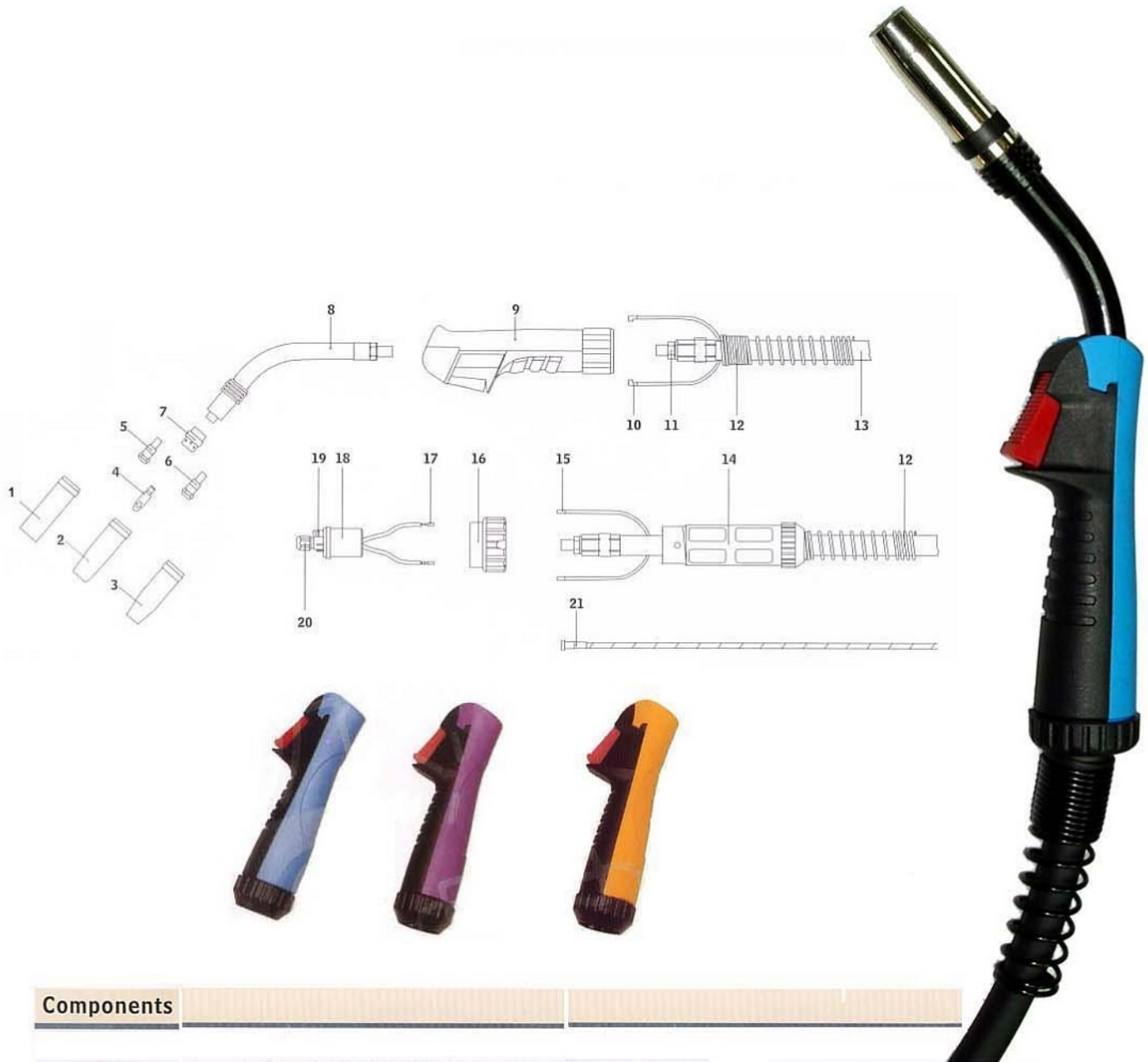


Components

NO.1	Gas Nozzle Cylindrical ND $\Phi 16.0$	NO.13	16 ² mm Mig Cable
NO.2	Gas Nozzle Conical ND $\Phi 12.0$	NO.14	Cable Support Machine Side
NO.3	Gas Nozzle Conical ND $\Phi 9.5$	NO.15	Trigger Wire Connector, Male
NO.4	E-Cu Contact Tip M6 \times 25 0.6/0.8/1.0mm	NO.16	Adaptor Nut
NO.5	Nozzle Spring	NO.17	Trigger Wire Connector, Female
NO.6	Gas Nozzle Holder	NO.18	Central Connector Euro
NO.7	Head Insulator	NO.19	O-Ring 4 \times 1
NO.8	Swan Neck	NO.20	Nut M10 \times 1
NO.9	Handle Set	NO.21	Euro Liner For Diam 0.6-1.0 mm 3m
NO.10	Trigger Wire Connector		Euro Liner For Diam 0.6-1.0 mm 4m
NO.11	Hexagon Nut		Euro Liner For Diam 0.6-1.0 mm 5m
NO.12	Cable Support Spring		

KM240 AIR COOLED EURO MODEL WELDING TORCH

Rating: 250A CO² 220A mixed gas, @ 60% duty cycle. 0.8mm to 1.2mm wires.

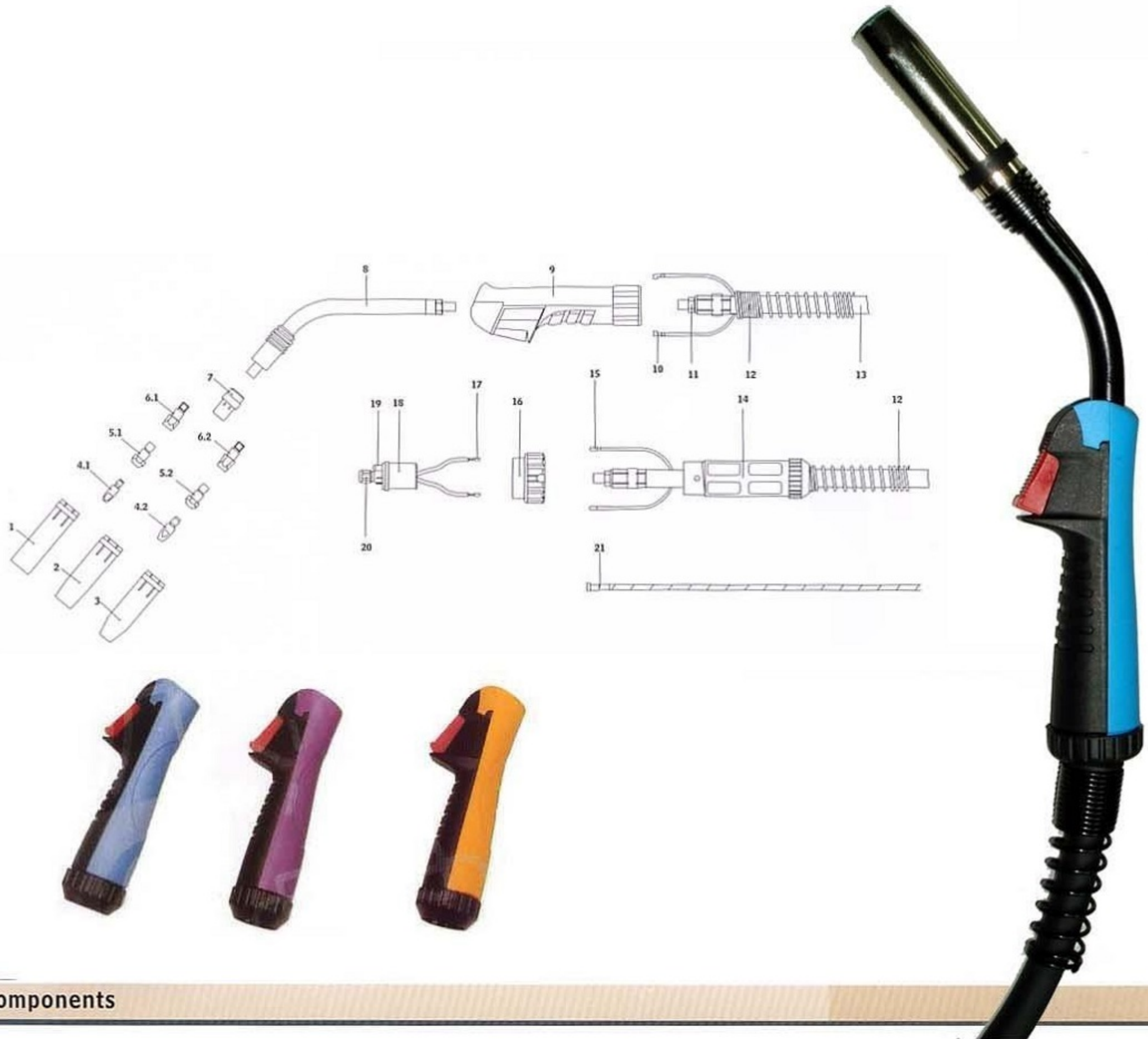


Components

NO.1	Gas Nozzle Cylindrical ND Φ 17.0	NO.13	25 ² mm Mig Cable
NO.2	Gas Nozzle Conical ND Φ 12.5	NO.14	Cable Support Machine Side
NO.3	Gas Nozzle Conical ND Φ 10.0	NO.15	Trigger Wire Connector, Male
NO.4	Contact Tip M6 \times 28 E-Cu 0.8/1.0/1.2mm	NO.16	Adaptor Nut
NO.5	Contact Tip Holder M6 \times 26	NO.17	Trigger Wire Connector, Female
NO.6	Contact Tip Holder M6 \times 28	NO.18	Central Connector Euro
NO.7	Gas Diffuser Ceramic	NO.19	O-Ring 4 \times 10
NO.8	Swan Neck	NO.20	Nut M10 \times 1
NO.9	Handle Set	NO.21	Euro Liner For Diam 0.9-1.2 mm 3m
NO.10	Trigger Wire Connector		Euro Liner For Diam 0.6-1.0 mm 4m
NO.11	Hexagon Nut		Euro Liner For Diam 0.6-1.0 mm 5m
NO.12	Cable Support Spring		

KM360 AIR COOLED EURO MODEL WELDING TORCH

Rating: 350A CO² 320A mixed gas, @ 60% duty cycle. 0.8mm to 1.2mm wires.

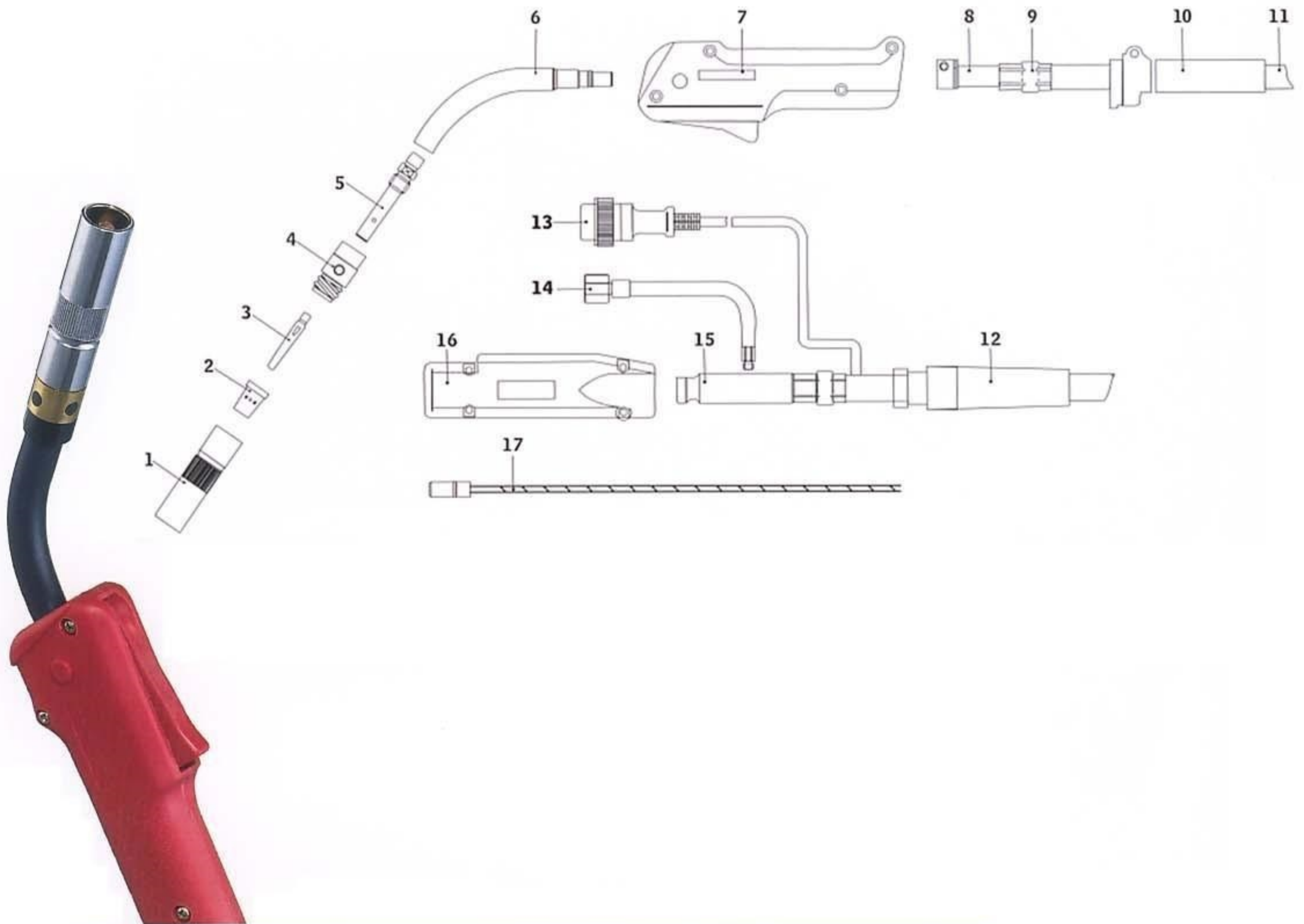


Components

NO.1	Gas Cylindrical Nozzle ND Φ 19.0	NO.13	34 ² mm Mig Cable 260A
NO.2	Gas Nozzle Conical ND Φ 16.0		48 ² mm Mig Cable 360/380A
NO.3	Gas Nozzle Conical ND Φ 12.0	NO.14	Cable Support Machine Side
NO.4.1	Contact Tip M6 \times 28 E-Cu 1.0/1.2/1.6mm	NO.15	Trigger Wire Connector, Male
NO.4.2	Contact Tip M8 \times 30 E-Cu 1.0/1.2/1.6mm	NO.16	Adaptor Nut
NO.5.1	Contact Tip Holder M6 \times 28	NO.17	Trigger Wire connector, Female
NO.5.2	Contact Tip Holder M8 \times 28	NO.18	Central Connector Euro
NO.6.1	Contact Tip Holder M6 \times 32	NO.19	O-Ring 4 \times 1
NO.6.2	Contact Tip Holder M8 \times 32	NO.20	Nut M10 \times 1
NO.7	Gas Diffuser Ceramic	NO.21	Euro Liner For Diam 1.0-1.6mm 3m
NO.8	Swan Neck		Euro Liner For Diam 1.0-1.6mm 4m
NO.9	Handle Set		Euro Liner For Diam 1.0-1.6mm 5m
NO.10	Trigger Wire Connector		
NO.11	Hexagon Nut		
NO.12	Cable Support Spring		

PANA TYPE MIG Welding Torch

Model: 350A & 500A

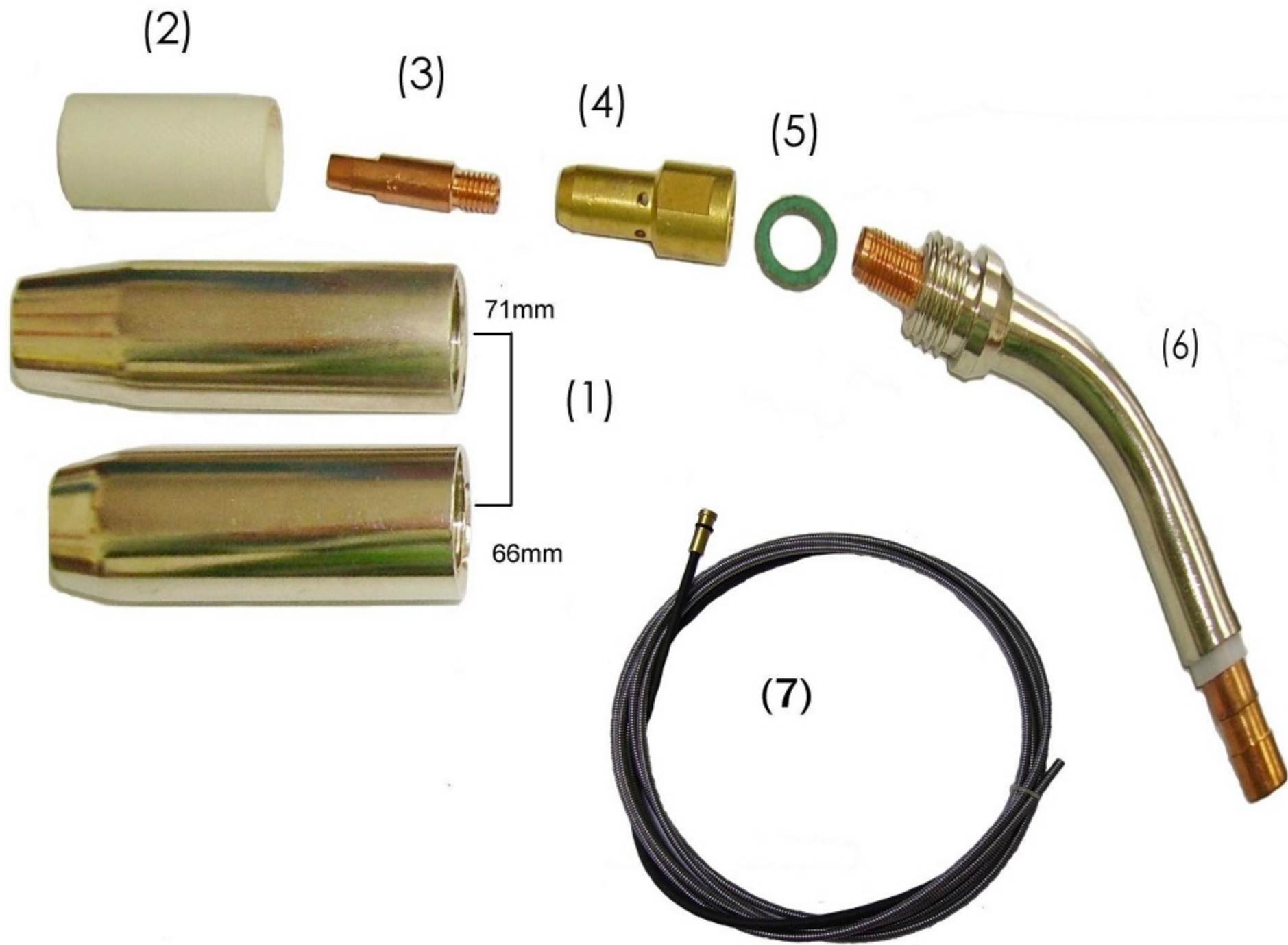


Components

NO.1	Gas Nozzle
NO.2	Gas Diffuser / Orifice
NO.3	Contact Tip M6×45 E-Cu
NO.4	Contact Tip M6×42 E-Cu
NO.5	Insulator
NO.6	Contact Tip Holder
NO.7	Swan Set 350/500
NO.8	Set Handle 350/500
NO.9	Swan Neck Holder w/Screw
NO.10	Clamp
NO.11	Cable Support Front
NO.12	34 ² mm Mig Cable
NO.13	Cable Support Back
NO.14	Plug Pana (Two Pin)
NO.15	Gas Hose Set
NO.16	Cable Connector Rear Pana
NO.17	Housing 180/200/350/500
	Pana Liner For Diam 0.9-1.2mm 3m
	Pana Liner For Diam 1.0-1.6mm 4m
	Pana Liner For Diam 1.0-1.6mm 5m

MECHAFIN TYPE

ME300A Mig Torch Welding Replace Parts List AIR COOLED

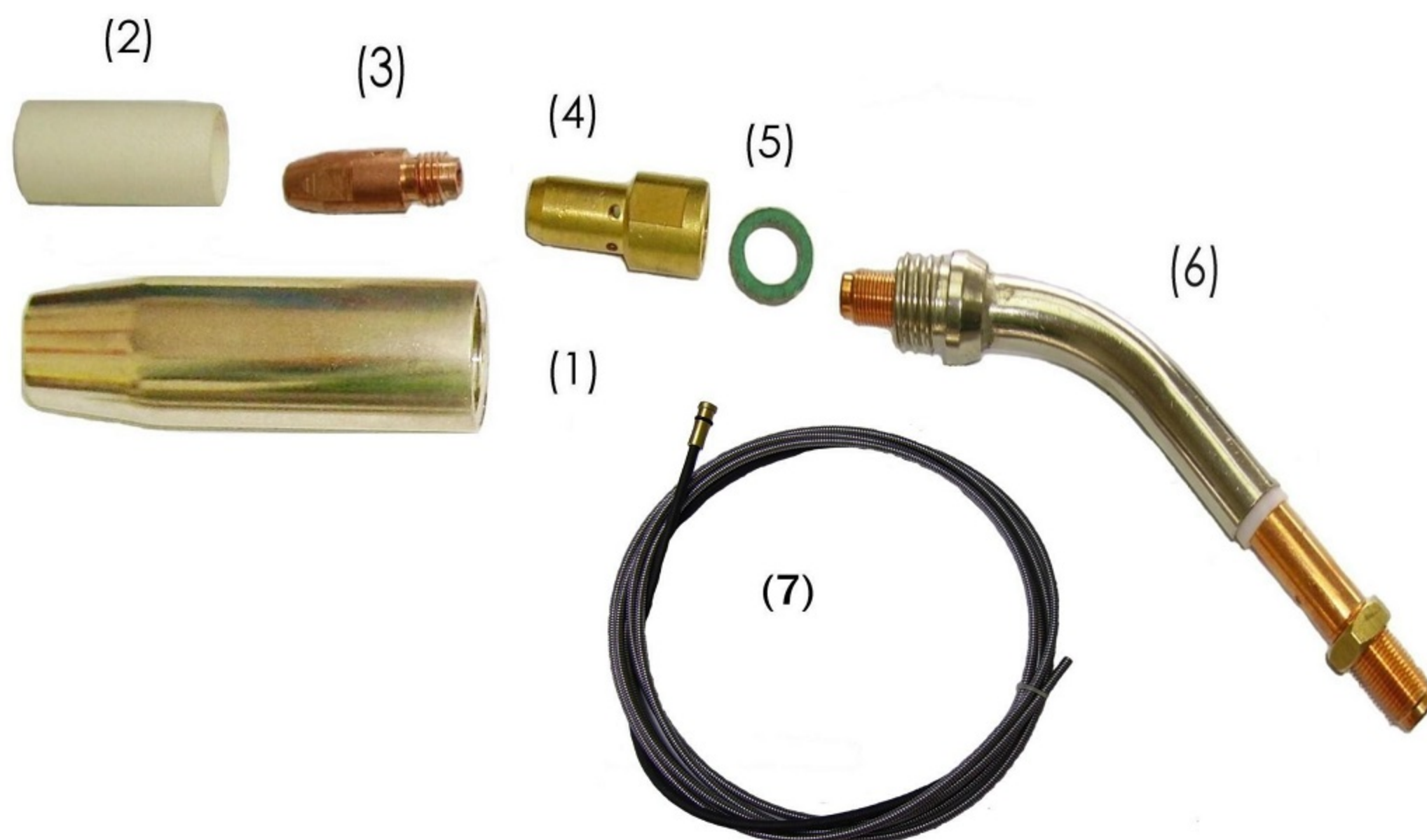


ME300A

ITEM	PART NO	DESCRIPTION
1	53003 53004 53005 53009	Dip Nozzle, Short conical Spray Nozzle, Long Conical Nozzle Parallel Spray Nozzle, Heavy Duty
2	53001	Nozzle Protector
3	- -	Contact Tip M6, 0.8mm-1.2mm Contact Tip M8, 0.8mm-3.2mm
4	53002 53008	Gas Diffuser M6 Gas Diffuser M8
5	57002	Swan Neck Insulating Disc
6	53000 53010	ME300A Swan Neck ME300A Staright Swan Neck
7	57191 57200	Liner 3.0m 0.8 -1.2mm, Small Nipple Liner 3.0m S 1.0 -1.2mm, Small Nipple

MECHAFIN TYPE

ME400A Mig Torch Welding Replace Parts List AIR COOLED

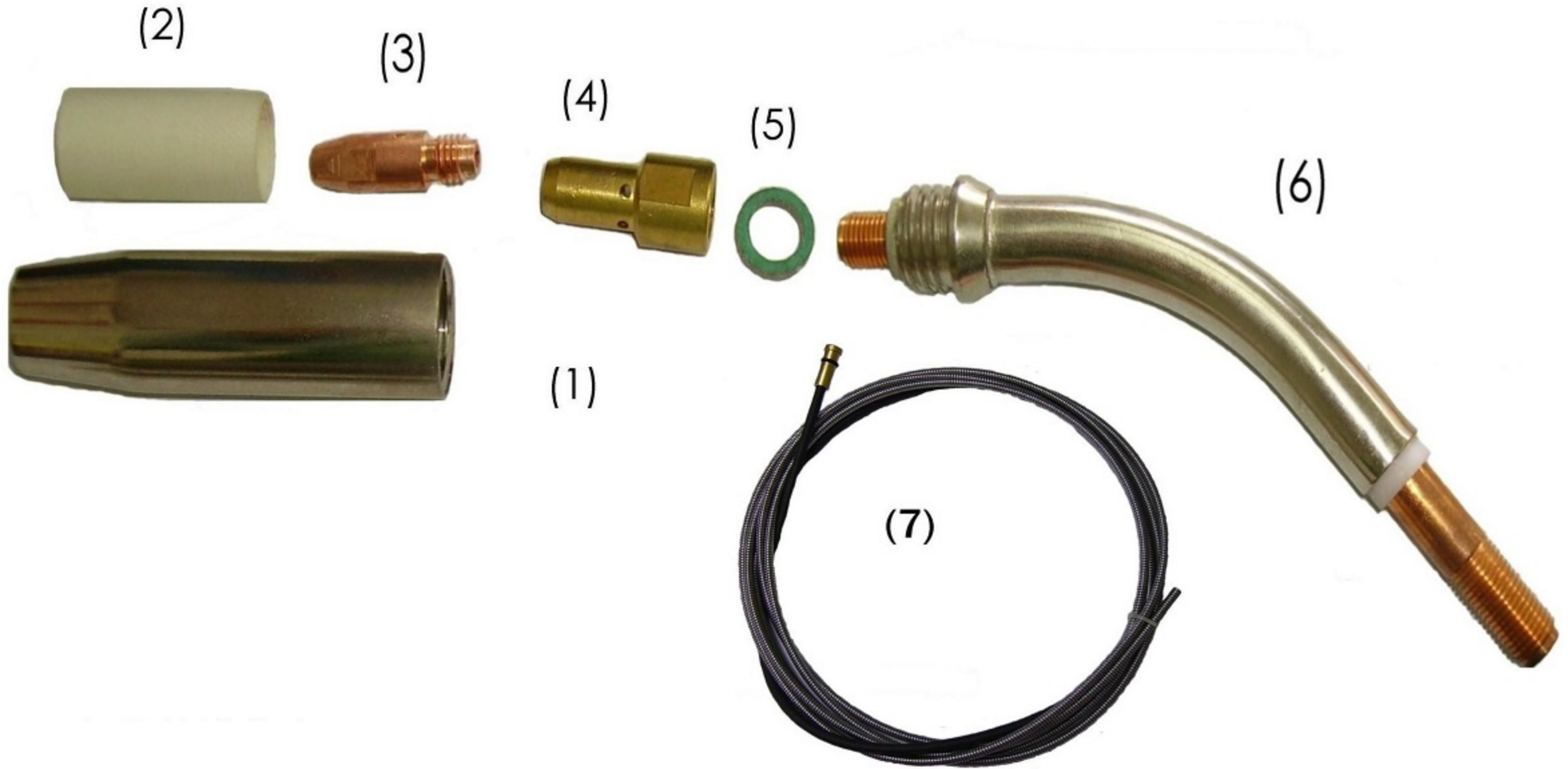


ME400A

Item	Part No	Description
1	54003 54004 54022	Dip Nozzle ,Short Conical Spray Nozzle ,Heavy Duty Pulse Nozzle ,Heavy Duty
2	54001	Nozzle Protector
3	-	Contact Tip M8,0.8mm- 3.2mm
4	54002	Gas Diffuser M8
5	57002	Swan Neck Insulating Disc
6	54017 54019	ME400A Swan Neck ME400A Straight Swan Neck
7	57197 57283 57263 57202 57252	Liner 4.0m 0.8-1.2mm,large nipple Liner 4.0m 0.2-1.4mm,large nipple Liner 4.0m 1.4-2.0mm,large nipple Liner 4.0m S 1.0-1.2mm,large nipple Liner 4.0m S 1.6mm ,large nipple

MECHAFIN TYPE

ME500A Mig Torch Welding Replace Parts List AIR COOLED



ME500A

ITEM	PART NO	DESCRIPTION
1	55003	Spray Nozzle,Heavy Duty,Copper
2	55001	Nozzle Protector
3	-	Contact Tip M8,0.8mm - 3.2mm
4	55002	Gas Diffuser M8
5	57004	Swan Neck Insulation Disc
6	55020	ME500A Swan Neck
7	57197 57283 57263 57363 57202 57252	Liner 4.0m 0.8-1.2mm,large nipple Liner 4.0m 0.2-1.4mm,large nipple Liner 4.0m 1.4-2.0mm,large nipple Liner 4.0m 2.4-3.2mm Large Nipple Liner 4.0m S 1.0- 1.2m Large Nipple Liner 4.0m S 1.6, Large Nipple